



Manual Rev.
1.01
1/2011

This manual is property of Redline Tuning LLC. Any unauthorized duplication or use without written permission from Redline Tuning LLC, violates Copyright laws. Copyright © 2003 Redline Tuning LLC. All Rights Reserved.

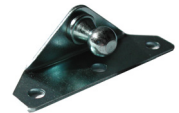


Subaru Forester (98-02) QuickLIFT Installation Guide

Step 1 - Unpack QuickLIFT system and verify contents.

Remove all items from the packing tube. You should have the following before beginning:

- * (2) Gas springs (**RT-QL-170-6A**) - Be sure to cycle them a few times before installing.
- * (8) 3/16" Multi-grip Rivets - **#2 MG**.
- * (2) Taller in height steel brackets - fender
- * (2) Low profile (longer in length) steel brackets (shown to the right) - hood
- * Printed Color Instructions



Hood bracket

Step 2 - Gather the required tools.

- * Power Drill
- * 3/16" or indexed #11 drill bits
- * Fine permanent marker or felt tip pen
- * Tape Measure or ruler
- * Masking Tape
- * Hammer & center punch
- * Rivet gun, capable of 3/16" rivets (most brands can handle this size)

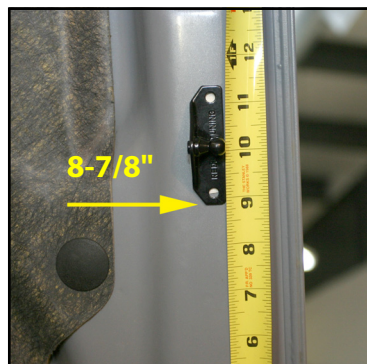
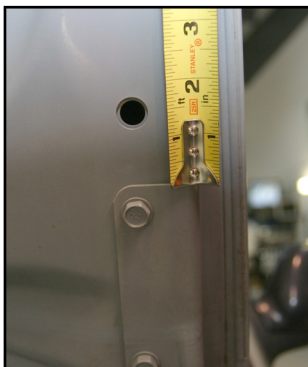
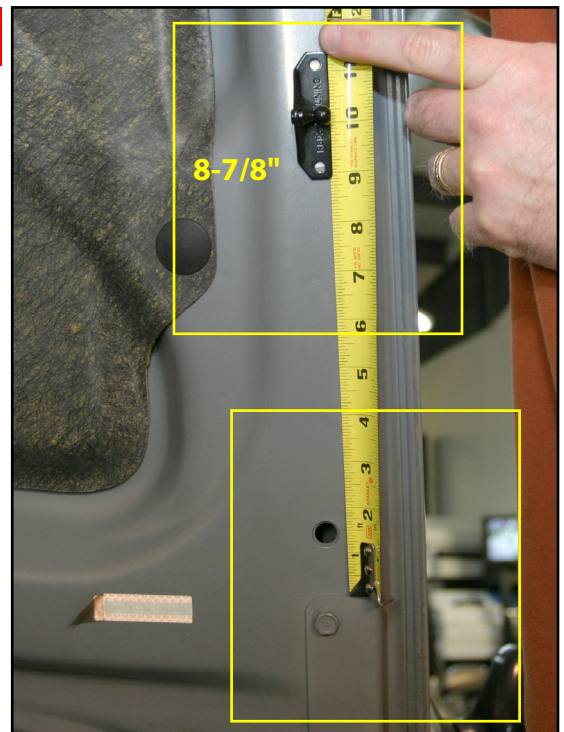
Note: Only use the rivets supplied in the QuickLIFT kit.



Recommended: Craftsman standard or Swivel Riveter (shown - 974749) - \$9.99 to \$17.99

Step 3 - Mark lower edge of hood bracket location.

- Open your hood.
- Using a piece of masking tape and a permanent marker, carefully measure from the top of the hood's hinge and measure along the hood's inner frame and place a mark on the hood masking tape at **8-7/8"**. This mark will be used to align the lower edge of the bracket in the next step.



Subaru Forester 98-02 Hood QuickLIFT

Step 4 - Align bracket and mark 1st hole for drilling.

A. Align the lower edge of the bracket with the mark you just made on the hood. You will need to view the hood straight-on as shown to the right. The bracket should sit on the inside edge of the frame with the ball-stud aiming outward or away from the vehicle and exactly **1 1/2"** from the bracket to the hood skin edge.

B. Holding bracket in place, mark the center of the lower hole using a permanent felt tip marker.

C. Set bracket aside. Using a center punch and a hammer, tap the center of the mark you just made (this indentation will help guide the drill bit and keep it from wandering).

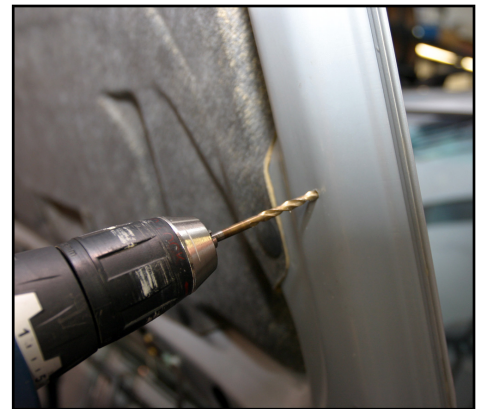


Step 5 - Drill #11 indexed bit hole, or 3/16" hole.

A. Carefully drill the hole as shown to the right using a **(#11 indexed bit)** or **(use 3/16" bit if #11 bit is not available)**.

If you do not have a #11 indexed bit, you can use the 3/16" bit, however you may have to test fit the rivet and slightly ream hole until rivet fits tightly through bracket and hole - 3/16" is slightly smaller than the #11 bit.

Wrap a piece of electrical tape around the drill bit about 1/4" from the tip to prevent the bit from denting the hood skin. Or you can use a drill-stop to set the depth... Use new and sharp bits!



Step 6 - Rivet lower bracket hole to hood using rivet gun.

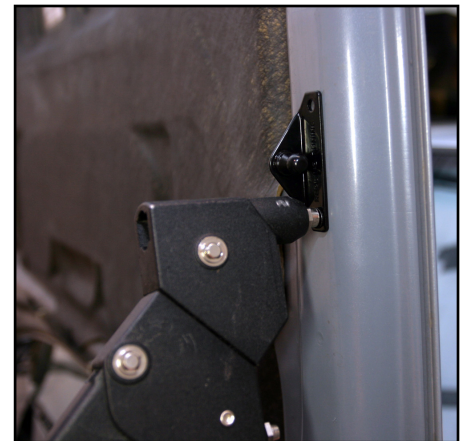
A. Hold the bracket in position. **USE ONLY THE LOW PROFILE BRACKETS FOR THE HOOD** - (longer in length, shorter in height).

B. With the bracket lined up again, place a **rivet** through the bracket and hole with the long stem sticking outward. The rivet may require a few twists while pushing it in.

C. Check to be sure your rivet gun has the **3/16"** rivet head installed, then slide rivet gun onto rivet. While applying downward force on rivet and bracket, firmly squeeze riveter handle multiple times until rivet gun pops and snaps off the rivet stem.

Riveting Tips:

Visit <http://www.redlinetuning.com/QL-tips.html>



Step 7 - Drill and rivet second hole.

A. Reposition or rotate bracket into the proper position against hood lip. Carefully drill the second hole through bracket hole and hood frame.

Wrap end of drill bit 1/4" down from tip with electrical tape to keep drill bit from pulling through and hitting hood skin.



Step 8 - Repeat steps 3-7 and install the passenger side hood bracket.

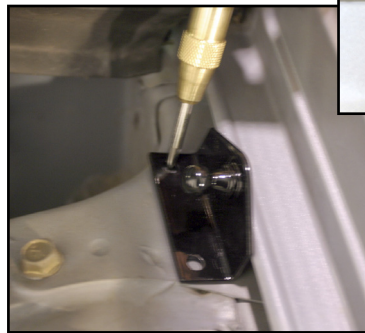
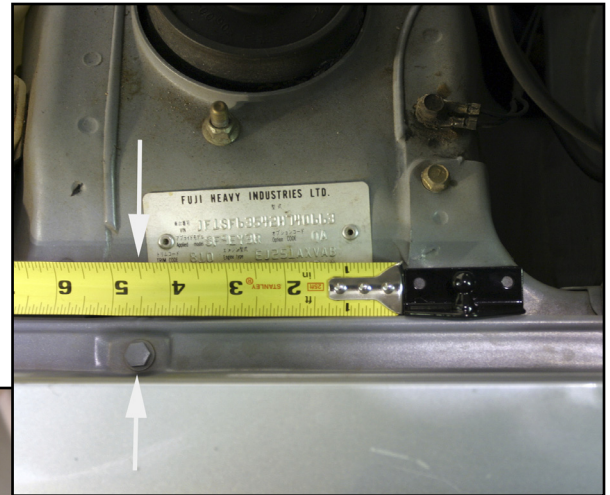
A. The hood has a symmetrical under structure. Repeat Steps 3-7 to install the upper passenger hood bracket. Take your time and be sure to use the short headed rivets for the other hood bracket.

Step 9 - Mark hole for drilling

A. Hold the bracket in position as shown to the right. The back of the bracket should be tight up against the fender lip, with the mounting surface centered in the area shown or 4 1/2" from the edge to the center of the fender bolt. Use photos from any step to help clarify location.

B. The ball-stud should be aiming inward - toward engine. The bottom of the bracket should be laying entirely on flat steel.

C. Mark center of the right hole.



Step 10 - Mark hole center before drilling right hole using 3/16" drill bit.

A. Using a center punch and a hammer, tap the center of the marked hole. This will help guide the drill bit and keep it from wandering during the following step.

B. Drill the hole at the marked position using a sharp **3/16" or indexed #11 drill bit.**



Step 11 - Rivet to fender.

A. Using a color matching paint, touch up the area where you just drilled the hole.

B. Rivet the bracket into place as described in an earlier.



Step 12 - Mark center with marker and indent with center punch.

- A. Using a permanent marker, mark the 2nd hole of the fender bracket. **Be sure the bracket is tucked up tightly to the fender lip.**
- B. Using a center punch and a hammer, tap the center of the marked hole. This will help guide the drill bit and keep it from wandering.

Step 13 - Drill second hole and attach bracket.

- A. Carefully drill the hole as shown to the right using a **(#11 indexed bit)** or **(use 3/16" bit if #11 bit is not available)**.
- B. Rivet bracket into place.

Step 14 - Repeat steps 9-13 to attach the passenger fender bracket.

- A. Repeat Steps 9-13 to attach the passenger side fender bracket. The vehicle is symmetrical so the same locators can be used. Feel free to measure off of key areas to ensure a symmetrical installation.

Step 15 - Cycle both gas springs - then install

- A. **CYCLE EACH GAS SPRING BEFORE INSTALLING** - firmly hold a gas spring with both hands by the thick cylindrical end - firmly press down on the floor or carpet and compress the spring. Do this to both springs. Have a friend hold the hood up. Remove the stock prop rod assembly at this time.
- B. Install the driver's side gas spring with the cylinder at the top (large end up). Be sure that the sockets snap securely onto the ball studs. Have friend remain holding the hood up. This procedure is most easily done if the hood ends are snapped on first and attach the lower fender ball studs last.

