



## 1999-2003 Mitsubishi Galant QuickLIFT Installation Guide

### Step 1 - Unpack QuickLIFT kit and verify contents.

Remove all items from the packing tube. You should have the following before beginning:

- \* (2) Gas springs (RT-QL-145-A8A) - Be sure to cycle them a few times before installing.
- \* (4) 3/16" Multi-grip Rivets for hood (**gold shaft**).
- \* (4) 3/16" Steel rivets for fender (**all steel**).
- \* (4) Steel brackets - 2 fender, 2 hood.
- \* Printed Color Instructions
- \* Gas Spring Locking clips - (Already installed in the gas spring ball ends - Remove before assembly)

Hood Rivets



Fender Rivets

### Step 2 - Gather the required tools.

Please gather the following tools before you begin the installation:

- \* Power Drill
- \* 3/16" and/or indexed #11 drill bits
- \* Fine permanent marker or felt tip pen
- \* Tape Measure or ruler
- \* Masking Tape
- \* Hammer & center punch
- \* Rivet gun, capable of 3/16" rivets (most brands can handle this size)

**Note:** Only use the rivets supplied in the QuickLIFT kit.

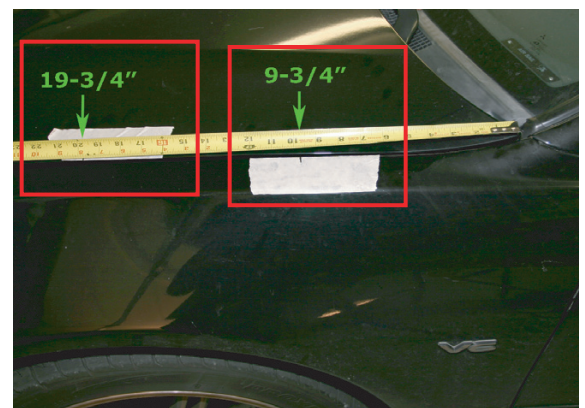


*Recommended:* Craftsman standard or Swivel Riveter (shown - 974749) - \$9.99 to \$17.99

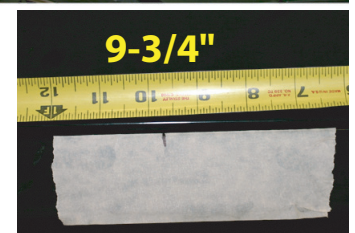
### Step 3 - Mark centerline of hood bracket location.

A. Leave your hood closed.

B. Using a piece of masking tape and a permanent marker, carefully measure from the hood's corner (near hinge and windshield) and along the fender line. Wrap the end of the tape measure over the corner lip and place a mark on the fender masking tape at **9-3/4"** and a mark on the hood masking tape at **19-3/4"**.



This mark will be used to align the centerline of the bracket's ball-stud in the next step.

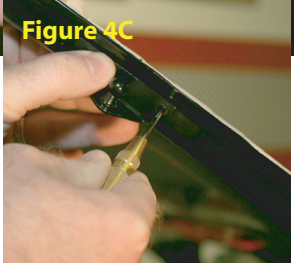
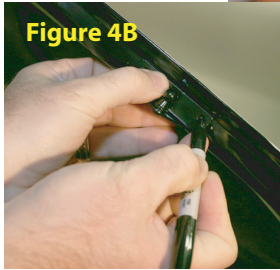
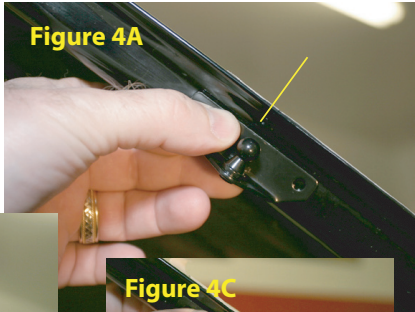


### Step 4 - Align bracket and mark right hole for drilling.

A. Align the center of the bracket with the mark you just made on the hood. You will need to view the hood directly from the side as shown in **Figure 4A**. The bracket should sit on the angled hood frame with the ball stud facing up or away from vehicle.

B. Holding bracket in place, mark the center of the right hole using a permanent felt tip marker. Be sure the bracket is straight and sitting flat against the hood's frame tucked up as close to the hood skin as possible - use photo as guide.

C. Set bracket aside. Using a center punch and a hammer, tap the center of the mark you just made (this indentation will help guide the drill bit and keep it from wandering).



### Step 5 - Drill #11 indexed bit hole, or 3/16" hole

A. Carefully drill the hole as shown to the right using a **(#11 indexed bit)** or **(use 3/16" bit if #11 bit is not available)**.

If you do not have a #11 indexed bit, you can use the 3/16" bit, however you may have to test fit the rivet and slightly ream hole until rivet fits tightly through bracket and hole - 3/16" is slightly smaller than the #11 bit.

**Wrap a piece of electrical tape around the drill bit about 1/4" from the tip to prevent the bit from denting the hood skin. Use new and sharp bits!**



### Step 6 - Rivet right end of bracket to hood - USE GOLD RIVETS

A. Hold the bracket in position.

B. With the bracket lined up again, place a rivet through the bracket and hole with the long stem sticking outward. The rivet may require a few twists while pushing it in.

C. Check to be sure your rivet gun has the **3/16"** rivet head installed, then slide rivet gun onto rivet. While applying downward force on rivet and bracket, firmly squeeze riveter handle multiple times until rivet gun pops and snaps off the rivet stem.



**Riveting Tips:**  
Visit <http://www.redlinetuning.com/QL-tips.html>

### Step 7 - Drill and rivet second hole

A. Reposition or rotate bracket into the proper position against hood lip. Carefully drill the second hole through bracket hole and hood.

**Wrap end of drill bit 1/4" down from tip with electrical tape to keep drill bit from pulling through and hitting hood skin.**

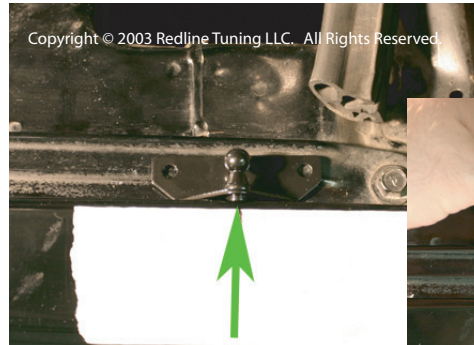


## Step 8 - Repeat steps 3-7 and install the passenger side hood bracket.

A. The hood has a symmetrical under structure. Repeat Steps 3-7 to install the upper passenger hood bracket. Take your time.

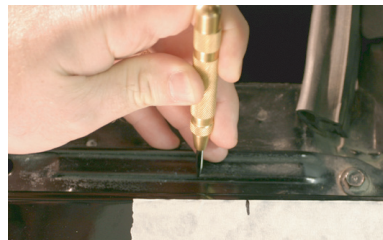
## Step 9 - Position and mark first hole for driver's side fender bracket.

A. Hold the bracket in position as shown to the right. The center-line of the bracket should be aligned with the fender mark you made earlier. The ball stud should be pointing inward or toward the vehicle and tucked up tightly against the inner fender.



## Step 10 - Mark hole center before drilling left hole using 3/16" drill bit.

A. Using a center punch and a hammer, tap the center of the marked hole. This will help guide the drill bit and keep it from wandering during the following step.



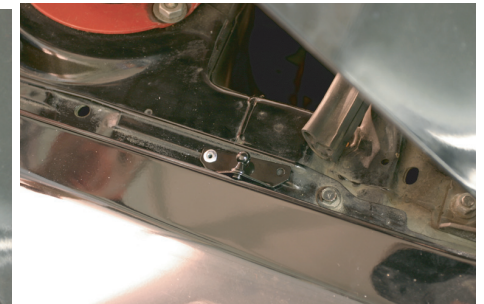
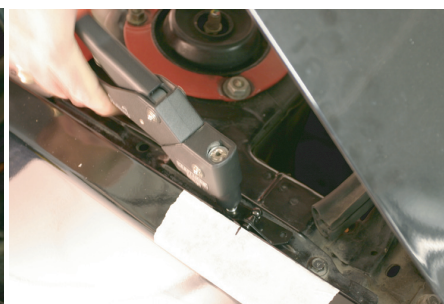
B. Drill the hole at the marked position using a sharp **3/16"** drill bit.



## Step 11 - Attach one end of the bracket to fender - USE SILVER (STEEL) RIVETS

A. Using a color matching paint, touch up the area where you just drilled the hole.

B. Rivet the bracket into place as described in an earlier step.



## Step 12 - Mark center with marker and indent with center punch.

- Using a permanent marker, mark the opposite hole of the fender bracket. **Be sure the bracket is tucked up tightly to the fender lip.**
- Using a center punch and a hammer, tap the center of the marked hole. This will help guide the drill bit and keep it from wandering.



## Step 13 - Drill second hole and attach bracket.

- Carefully drill the hole as shown to the right using a **3/16" drill bit.**
- Rivet bracket into place using steel silver rivets.



## Step 14 - Repeat steps 9-13 to attach the passenger fender bracket.

- Repeat Steps 9-13 to attach the passenger side fender bracket. The vehicle is symmetrical so the same locators can be used. Feel free to measure off of key areas to ensure a symmetrical installation.

## Step 15 - Cycle both gas springs - then install

- CYCLE EACH GAS SPRING BEFORE INSTALLING** - firmly hold a gas spring with both hands by the thick cylindrical end - firmly press down on the floor or carpet and compress the spring. Do this to both springs. Have a friend hold the hood up. Remove the stock prop rod assembly at this time.
- Install the driver's side gas spring with the cylinder at the top (large end up). Be sure that the sockets snap securely onto the ball studs. Have friend remain holding the hood up until Step 16 is completed. This procedure is most easily done if the hood ends are snapped on first and attach the lower fender ball studs last. Photos may not represent the gas spring direction indicated here.

## Step 16 - Install the gas spring locking clips.

- Insert the gas spring locking clips and be sure that they are snapped on securely. These will lock the ball-studs onto the sockets and keep the gas springs in place.

## Step 17 - Re-route washer fluid hose.

- Remove the plastic washer hose retainer clip from the fender. The gas spring will use this area when the hood is close.

