



Manual Rev.  
1.01  
6/30/07

This manual is property of Redline Tuning LLC. Any unauthorized duplication or use without written permission from Redline Tuning LLC, violates Copyright laws. Copyright © 2003 Redline Tuning LLC. All Rights Reserved.



## 1986-2001 Jeep Cherokee QuickLIFT Installation Guide

### Step 1 - Unpack QuickLIFT kit and verify contents.

Remove all items from the packing tube. You should have the following before beginning:

- \* (2) Gas springs (**RT-QL-200-5A**) - Be sure to cycle them a few times before installing.
- \* (8) 3/16" #2 Multi-grip Rivets
- \* (4) Steel ball-stud mounting brackets
- \* Printed Color Instructions
- \* Gas Spring Locking clips - (Already installed in the gas spring ball ends - Remove before assembly)



### Step 2 - Gather the required tools.

Please gather the following tools before you begin the installation:

- \* Power Drill
- \* 3/16" or indexed #11 drill bits
- \* Fine permanent marker or felt tip pen
- \* Tape Measure or ruler
- \* Masking Tape
- \* Hammer & center punch
- \* Rivet gun, capable of 3/16" rivets (most brands can handle this size)



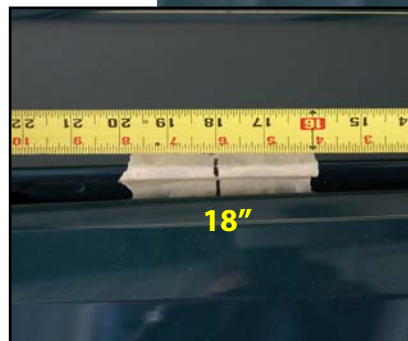
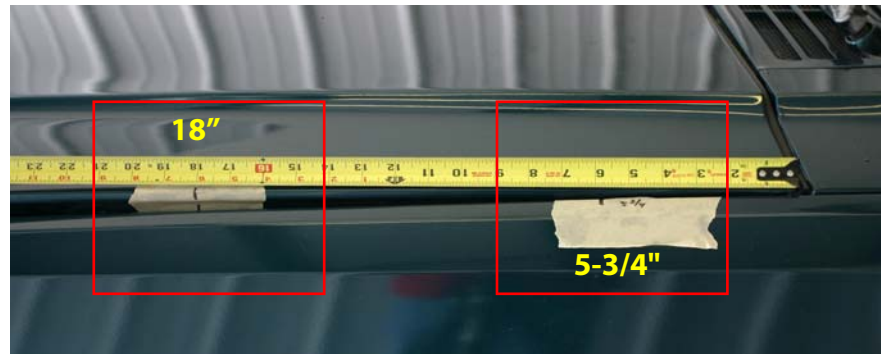
*Recommended:* Craftsman standard or Swivel Riveter (shown - 974749) - \$9.99 to \$17.99

**Note:** Only use the rivets supplied in the QuickLIFT system.

### Step 3 - Mark centerline of hood bracket location.

A. Leave your hood closed.

B. Using a piece of masking tape and a permanent marker, carefully measure from the hood's corner (near windshield) and measure along the fender line. Wrap the end of the tape measure over the corner lip and place a mark on the fender masking tape at **5-3/4"**. Then place a mark on the hood tape at **18"**.



These marks will be used to align the centerline of the bracket's ball-studs in the following steps.

Jeep Cherokee 86-01 Hood QuickLIFT

### Step 4 - Align bracket and mark 1st hole for drilling.

A. Align the center of the bracket with the mark you just made on the hood. You will need to view the hood directly from the side as shown in **Figure 4A**. The bracket should sit on the inner frame frame with the ball stud facing out or away from the vehicle - **Figure 4B & C**.

B. Holding bracket in place, mark the center of the lower hole using a permanent felt tip marker. You may need to trim back the hood's insulation as shown. Use photos from this step and others to clarify mounting location.

C. Set bracket aside. Using a center punch and a hammer, tap the center of the mark you just made (this indentation will help guide the drill bit and keep it from wandering). Check placement before continuing.

Figure 4A

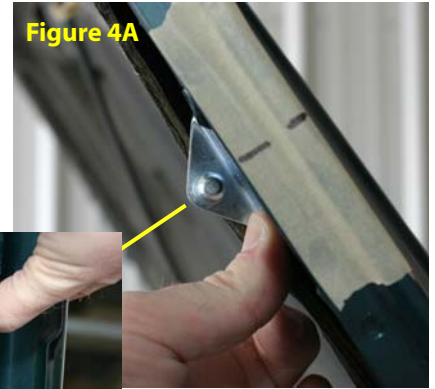


Figure 4B



Figure 4C



### Step 5 - Drill #11 indexed bit hole, or 3/16" hole.

A. Carefully drill the hole as shown to the right using a **(#11 indexed bit)** or **(use 3/16" bit if #11 bit is not available)**.

If you do not have a #11 indexed bit, you can use the 3/16" bit, however you may have to test fit the rivet and slightly ream hole until rivet fits tightly through bracket and hole - 3/16" is slightly smaller than the #11 bit.

**For those who do not have a depth-stop, wrap a piece of electrical tape around the drill bit about 1/4" from the tip to prevent the bit from denting the hood skin. Use new and sharp bits!**



### Step 6 - Rivet lower end of bracket to hood.

A. Hold the bracket in position.

B. With the bracket lined up again, place a **rivet** through the bracket and hole with the long stem sticking outward. The rivet may require a few twists while pushing it in.

C. Check to be sure your rivet gun has the **3/16"** rivet head installed, then slide rivet gun onto rivet. While applying downward force on rivet and bracket, firmly squeeze riveter handle multiple times until rivet gun pops and snaps off the rivet stem.



### Step 7 - Drill and rivet second hole.

A. Reposition or rotate bracket into the proper position against hood lip. Carefully drill the second hole through bracket hole and hood frame.

Wrap end of drill bit 1/4" down from tip with electrical tape to keep drill bit from pulling through and hitting hood skin.

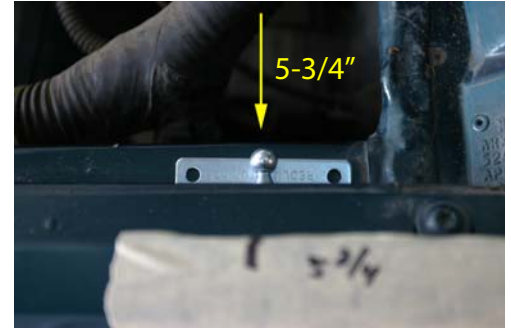


## Step 8 - Repeat steps 3-7 and install the passenger side hood bracket.

A. The hood has a symmetrical under structure. Repeat Steps 3-7 to install the upper passenger hood bracket. Take your time and be sure to use the short headed rivets for the other hood bracket.

## Step 9 - Position and mark first hole for driver's side fender bracket.

A. Hold the bracket in position as shown to the right. Back of bracket should be up against inner fender lip with the ball-stud pointing inward or toward the engine. Mark center of the right hole and drill hole using the same drill bit as used on the hood brackets.



## Step 10 - Attach the right side of the bracket to fender.

A. Insert rivet through bracket hole and fender. Rivet one side of bracket into place.



## Step 11 - Mark center with marker, punch, then drill and rivet.

A. Using a permanent marker, mark the 2nd hole of the fender bracket.

B. Using a center punch and a hammer, tap the center of the marked hole. This will help guide the drill bit and keep it from wandering

C. Drill hole, then rivet as in earlier steps.



## Step 12 - Repeat steps 9-11 to attach the passenger fender bracket.

A. Repeat Steps 9-11 to attach the passenger side fender bracket. The vehicle is symmetrical so the same locators can be used. Feel free to measure off of key areas to ensure a symmetrical installation.

## Step 13 - Cycle both gas springs - then install

A. **CYCLE EACH GAS SPRING BEFORE INSTALLING** - firmly hold a gas spring with both hands by the thick cylindrical end - firmly press down on the floor or carpet and compress the spring. Do this to both springs. Have a friend hold the hood up. Remove the stock prop rod assembly at this time.

B. Install the driver's side gas spring with the cylinder at the top (large end up). Be sure that the sockets snap securely onto the ball studs. Have a friend remain holding the hood up until Step 15 is completed. This procedure is most easily done if the hood ends are snapped on first and attach the lower fender ball studs last.



## Step 14 - Install the gas spring locking clips.

A. Insert the gas spring locking clips and be sure that they are snapped on securely. These will lock the ball-studs onto the sockets and keep the gas springs in place.



## Step 15 - Remove prop rod.

A. Using a 10mm socket and wrench, remove the two bolts that hold on the prop rod. Discard.

