



Manual Rev.
1.05
9/12

This manual is property of Redline Tuning LLC. Any unauthorized duplication or use without written permission from Redline Tuning LLC, violates Copyright laws.
Copyright © 2003 Redline Tuning LLC. All Rights Reserved.



1993-2011 Ford Ranger QuickLIFT Installation Guide

Step 1 - Unpack QuickLIFT system and verify contents.

Remove all items from the packing tube. You should have the following before beginning:

- * (2) Gas Springs - QL-200-7A **Be sure to cycle them a few times before installing!**
- * (4) 3/16" MG rivets - for hood brackets
- * (2) 3/16" Aluminum MG rivets - center hole of hood brackets
- * (4) 5/16" head self-tapping sheet metal screws - fender brackets
- * (2) Fender Steel brackets - 90 degree angle
- * (2) Hood Steel brackets - 3-holes and angled
- * Printed Instructions



Step 2 - Gather the required tools.

Please gather the following tools before you begin the installation:

- * Power Drill
- * (3/16" and indexed #11 bits), & 5/32" drill bit
- * 5/16 socket and socket wrench
- * Fine permanent marker or felt tip pen
- * Tape Measure or ruler
- * Hammer & center punch
- * Rivet gun, capable of 3/16" rivets (most brands can handle this size)



Step 3 - Mark location of hood bracket.

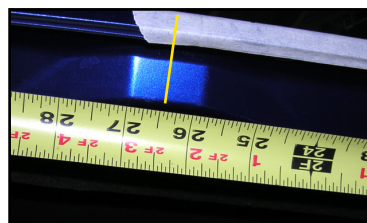
A. Leave hood closed. Locate the two angled hood steel brackets - these brackets are slightly opened and have 3-holes.



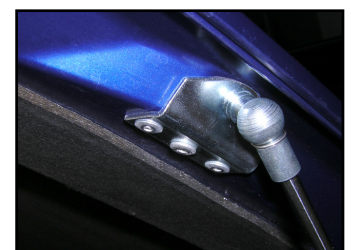
B. Measuring from the hood corner (nearest the windshield), place a mark on a piece of masking tape at the **25-1/2"** mark. Measure carefully.

For Ranger FX4 and other versions that do not allow the bracket to align properly at 25-1/2", measure 26-1/2" shown below. Actually, any dimension 25-1/2" or LONGER can be used - this just lowers the raised height.

C. Place bracket as shown - ball-stud should point outward or away from vehicle with the back of the bracket resting tightly against the hood's under structure. Align the mark you just made with the centerline of the ball stud on the bracket as shown.



FX4 as noted (Mark 26-1/2")
Bracket will sit centered on above protrusion.



FX4 mounting location shown.

Step 4 - Mark lower hole for drilling.

A. Holding bracket in place, mark the center of the lower hole using a permanent felt tip marker. Be sure the bracket is straight and sitting flat against hood's under structure.

B. Set bracket aside. Using a center punch and a hammer, tap the center of the mark you just made (this indentation will help guide the drill bit and keep it from wandering).

Place bracket back in place to be sure it is still centered where it should be - aligning the ball-stud centerline with the mark.



Step 5 - Drill lower #11 or 3/16" hole.

A. Carefully drill the hole as shown to the right using a (#11 indexed bit) or (use 3/16" bit if #11 bit is not available).

If you do not have a #11 indexed bit, you can use the 3/16" bit, however you may have to test fit the rivet and slightly ream hole until rivet fits tightly through bracket and hole - 3/16" is slightly smaller than the #11 bit.

Wrap a piece of electrical tape around the drill bit about 1/4" from the tip to prevent the bit from denting the hood skin. Use new and sharp bits!

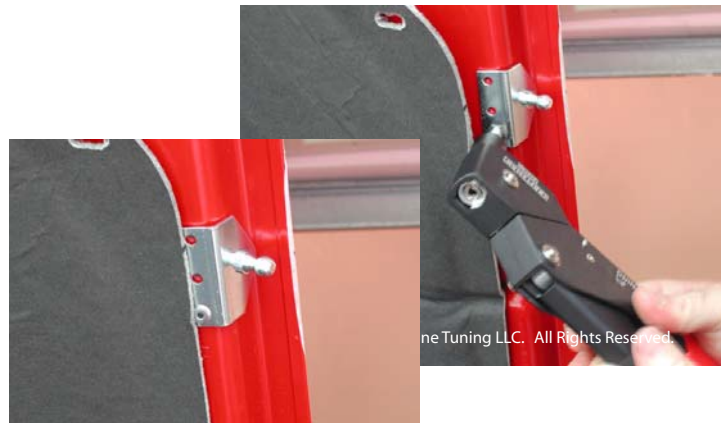


Step 6 - Rivet lower end of bracket to hood.

A. Hold the bracket in position.

B. With the bracket lined up again, place a rivet through the bracket and hole with the long stem sticking outward. The rivet may require a few twists while pushing it in.

C. Check to be sure your rivet gun has the 3/16" rivet head installed, then slide rivet gun onto rivet. While applying downward force on rivet and bracket, firmly squeeze riveter handle multiple times until rivet gun pops and snaps off the rivet stem.



Step 7 - Drill and rivet upper hole - then drill and rivet hole in center of bracket.

A. Reposition or rotate bracket into the proper position against hood lip. Carefully drill the second hole through bracket hole and hood.

Be careful not to drill up through top of the hood.

B. Rivet the upper hole - shown in Figure 1.

C. Then drill and rivet the final rivet (the longer Aluminum rivet) into the middle hole.



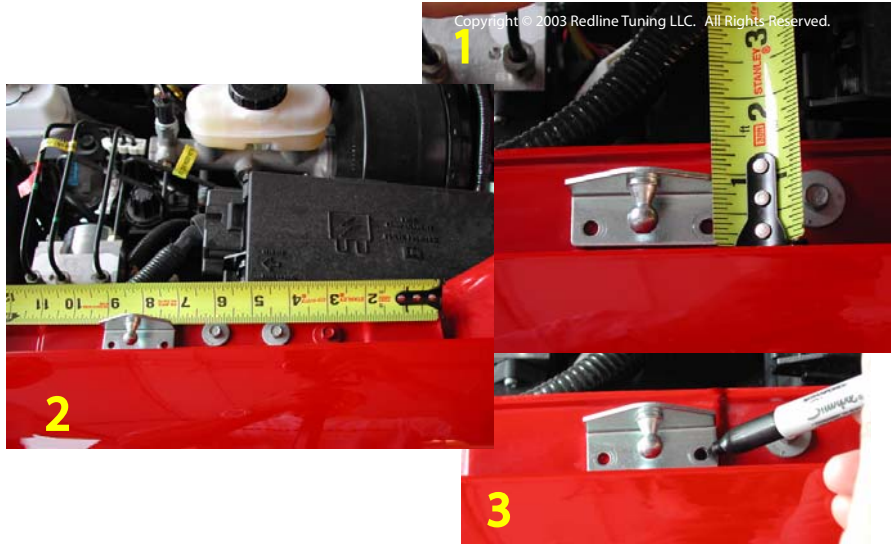
Step 8 - Repeat steps 3-7 and install the passenger side hood bracket.

A. The hood has a symmetrical under structure. Repeat Steps 3-7 to install the upper passenger hood bracket. Take your time.

Step 9 - Position and mark first hole for driver's side fender bracket.

A. Place the bracket in the position shown to the right. Measure **1"** from the fender to the outside vertical edge of the bracket with the ball stud pointing away from the vehicle and approximately **7 - 1/8"** from edge of the steel fender lip as shown to the edge of the bracket.

B. Mark upper hole using a fine permanent marker.



Step 10 - Mark hole center before drilling.

A. Using a center punch and a hammer, tap the center of the marked hole. This will help guide the drill bit and keep it from wandering during the following step.



Step 11 - Drill upper or right hole using 5/32" drill bit.

A. Drill the upper or right hole at the marked position using a **5/32" drill bit**.



Step 12 - Attach the upper or right end of the bracket to fender.

A. Using a color matching paint, touch up the area where you just drilled the hole.

B. Using a 5/16" socket and wrench, carefully screw the right or upper screw into the fender. Apply adequate pressure while screwing the sheet metal screw in - you will be creating threads in the fender and it will require force.

There are multiple layers of sheet metal under the fender lip that require the screw to thread itself through.



Step 13 - Mark center with marker and indent with center punch.

- Using a permanent marker, mark the left or lower hole of the fender bracket. **Be sure the bracket is parallel to the fender.**
- Using a center punch and a hammer, tap the center of the marked hole. This will help guide the drill bit and keep it from wandering.

Step 14 - Drill second hole and attach bracket.

- Drill the second hole (hole closer to the front of the vehicle) at the marked position using a **5/32"** drill bit.
- Attach the bracket using the same 5/16" socket and wrench.

Secure both screws at this time - bracket should be secure and solid.



Step 15 - Repeat steps 9-14 to attach the passenger fender bracket.

- Repeat Steps 9-14 to attach the passenger side fender bracket. The vehicle is symmetrical so the same locators can be used. Feel free to measure off of key areas to ensure a symmetrical installation.

Step 16 - Cycle both gas springs - then install

- CYCLE EACH GAS SPRING BEFORE INSTALLING** - firmly hold a gas spring with both hands by the thick cylindrical end - firmly press down on the floor or carpet and compress the spring. Do this to both. Have a friend hold the hood up. Remove the stock prop rod assembly at this time.
- Install the driver's side gas spring with the cylinder at the top (large end up). Be sure that the sockets snap securely onto the ball studs. Have friend remain holding the hood up until Step 17 is completed. This procedure is most easily done if the upper ends are snapped on first and attach the lower ends last.

Step 17 - Test installation.

- Remove all tools from engine area. Check that all the steps were followed correctly and that the brackets and struts are securely mounted.
- Lower hood slowly and check for clearance issues. Once you are certain that the steps were followed correctly, carefully lower the hood. The springs will take a few repetitive operations to get them working properly.

