



## 2005+ Ford Focus QuickLIFT Installation Guide

### Step 1 - Unpack QuickLIFT kit and verify contents.

Remove all items from the packing tube. You should have the following before beginning:

- \* (1) Gas spring - Part No. **RT-QL-200-A7A-SS** (Be sure to cycle before installing)
- \* (2) Ball-stud brackets
- \* (4) multi-grip rivets
- \* Printed Color Instructions
- \* Gas Spring Locking clips (these are already installed in the gas spring ball ends - remove before assembly  
**DO NOT LOSE THE LOCKING CLIPS - they disappear when dropped!**)



### Step 2 - Gather the required tools.

Please gather the following tools before you begin the installation:

- \* Power Drill
- \* 3/16", indexed #11 drill bits
- \* Fine permanent marker or felt tip pen
- \* Tape Measure or ruler
- \* Masking Tape
- \* Hammer & center punch
- \* Rivet gun, capable of 3/16" rivets (most brands can handle this size)

**Note:** Only use the rivets supplied in the QuickLIFT kit.

### Step 3 - Mark hood bracket centerline.

A. Place a piece of masking tape on the hood's edge centered around the 23" mark, when measuring from the top of the hood's hinge shown to the right.

B Measure from the top of the hood's hinge up along the edge and place a mark at **22-3/4"**. This mark will be used to align the hood bracket (centerline of the ball-stud).



Copyright © 2003 Redline Tuning LLC. All Rights Reserved.



Copyright © 2003 Redline Tuning LLC. All Rights Reserved.

## Step 4 - Mark lower hole for drilling.

A. Holding bracket in place with the ball-stud pointing out and downward, mark the center of the lower hole using a permanent felt tip marker. Be sure the bracket is straight and sitting flat against the hood's skin.

B. Set bracket aside. Using a center punch and a hammer, tap the center of the mark you just made (this indentation will help guide the drill bit and keep it from wandering).



## Step 5 - Drill #11 indexed bit hole, or 3/16" hole.

A. Carefully drill the lower bracket hole as shown to the right using a (#11 indexed bit) or (use 3/16" bit if #11 bit is not available).

If you do not have a #11 indexed bit, you can use the 3/16" bit, however you may have to test fit the rivet and slightly ream hole until rivet fits tightly through bracket and hole - 3/16" is slightly smaller than the #11 bit. Do not use any other drill bit sizes!

Wrap a piece of electrical tape around the drill bit about 1/4" from the tip to prevent the bit from denting the hood skin. Use new and sharp bits!



## Step 6 - Rivet bracket to hood.

A. Hold the bracket in position.

B. With the bracket lined up again, place the rivet through the bracket and hole with the long stem sticking outward - shown to the right. The rivet may require a few twists while pushing it in.

C. Check to be sure your rivet gun has the 3/16" rivet head installed, then slide rivet gun onto rivet. While applying downward force on rivet and bracket, firmly squeeze riveter handle multiple times until rivet gun pops and snaps off the rivet stem.



## Step 7 - Drill and rivet upper hole

A. Reposition or rotate bracket into the proper position parallel to the frame. Tap center of upper hole. Carefully drill the second hole through bracket hole and hood.

Wrap end of drill bit 1/4" down from tip with electrical tape to keep drill bit from pulling

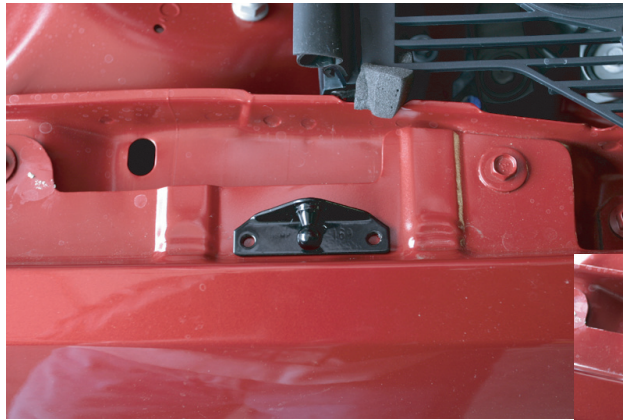




## Step 8 - Position and mark first hole for driver's side fender bracket.

A. Hold the bracket in position as shown to the right. The bracket should sit between the two raised sections on the fender near the cowl seal.

The bracket's ball-stud should be facing outward or away from the vehicle.



## Step 9 - Mark hole center before drilling first hole using 3/16" drill bit.

A. Using a center punch and a hammer, tap the center of the marked hole. This will help guide the drill bit and keep it from wandering during the following step.

B. Drill the hole at the marked position using a sharp **3/16"** or **#11 "**drill bit.



Copyright © 2003 Redline Tuning LLC. All Rights Reserved.

## Step 10 - Attach one end of the bracket to fender.

A. Using a color matching paint, touch up the area where you just drilled the hole.

B. Rivet one end of the bracket in place - be sure that the ball-stud is facing outward or away from the vehicle.

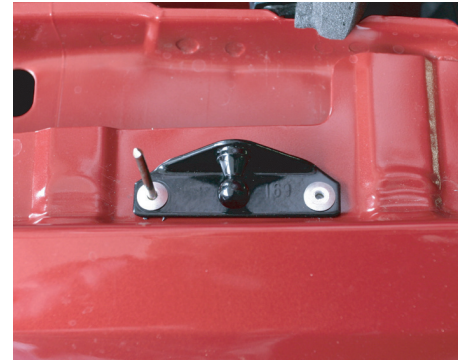


## Step 11 - Mark center with marker and indent with center punch.

A. Using a permanent marker, mark the opposite hole of the fender bracket.

**Be sure the bracket is parallel to the fender.**

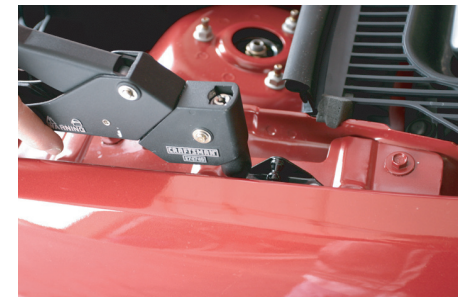
B. Using a center punch and a hammer, tap the center of the marked hole. This will help guide the drill bit and keep it from wandering.



## Step 12 - Drill second hole and attach bracket.

A. Drill the hole at the marked position using a **3/16" or #11 indexed** drill bit.

B. Rivet bracket into place.



## Step 13 - Cycle gas spring - then install

A. **CYCLE GAS SPRING BEFORE INSTALLING** - firmly hold a gas spring with both hands by the thick cylindrical end - firmly press down on the floor or carpet and compress the spring. Have a friend hold the hood up. Remove the stock prop rod assembly at this time.

B. Install the gas spring with the cylinder at the top (large end up). Be sure that the sockets snap securely onto the ball studs. Have friend remain holding the hood up until Step 14 is completed. This procedure is most easily done if the hood end is snapped on first and attach the lower fender ball stud last.



## Step 14 - Install the gas spring locking clips.

A. Insert the gas spring locking clips as shown below.

B. Check over assembly to be sure each step was completed correctly. Slowly lower your hood the first time.

ENJOY YOUR QUICKLIFT KIT!

